

Appendix 4

Learning Pathway Centres

LPC's



Why a new provision?



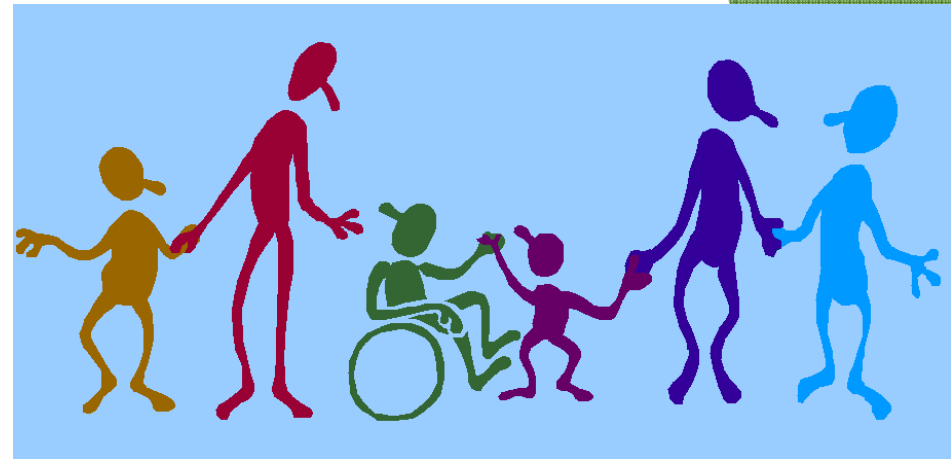
- SRB at Newbridge
- Exclusions rate in CCBC
- Provision for non main stream students
- Spaces available at The Learning Centre
- Matches the need of students by providing a flexible curriculum
- Engages all students

Initial Concept



- Hubs on school sites
- Alternate education
- KS3/4
- Heads to agree a CCBC provision
- Not suitable for ALL pupils
- Curriculum bespoke to the individual
- Leader/Teacher/LSA/Behaviour modification
- Youth Workers/Family Liaison
- Funded through AWPU & PDG

Why this model?



- Bedwas Inclusion Programme
- BiP - tried and tested
- Outcomes - Attendance 94% +
- Exclusions 900+ days to 31 days
- 24 students annually EOTAS
- Presently one student
- L2+ - 24% - 51% in 4 years
- Estyn/other LA answers

What will it look like?

- Maximum 20 students
- 4 Hubs across CCBC
- Disapplication of National Curriculum
- Different start and finish time
- ALL students to achieve qualifications
- Social/Life skills
- Prince's Trust - (monitoring until 25)
- Physical Activities
- Alternate curriculum days (Military Prep)
- Planned reintegration of students



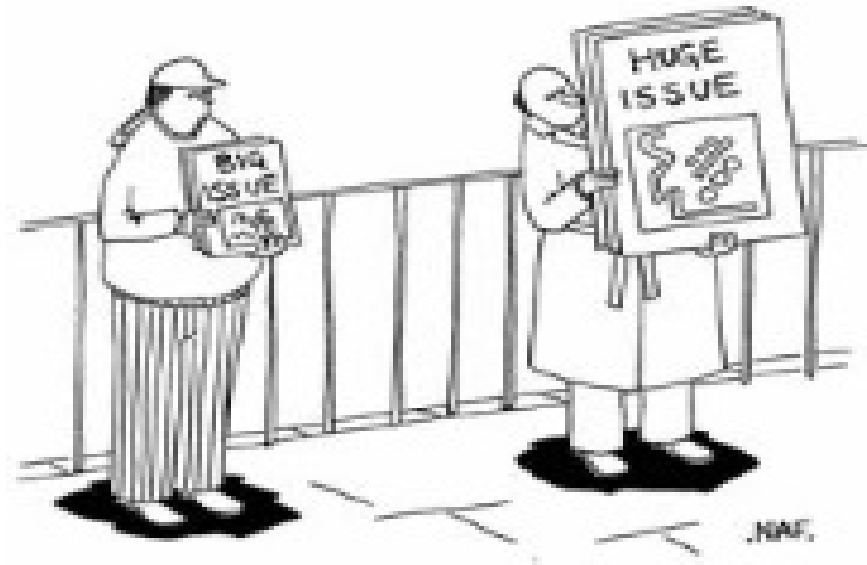
What have we achieved?

- 2 centres Heolddu/Lewis
- 3rd Centre agreed at Y Gwindy
- Building works complete
- Leaders & Teachers at 2 centres
- Youth Workers/Home liaison staff
- EWO support
- 2 Panel meetings completed
- 12 Students in each centre
- Referral forms in place for schools
- ALL CCBC heads on board



Issues?

- Schools expectations
- Transport to and from LPC
- Behaviour support staff
- Literacy LSA's
- 3rd centre staffing
- Schools sharing behaviour strategies
- Link to EOTAS
- Senior teacher to oversee



Initial Success

- ALL schools engaging
- Pupil profiles
- Vetting process
- Pupils already engaged
- Curriculum bespoke
- Leaders proactive & share vision
- WG meeting:
'A brave move by the CCBC'

